

## 7<sup>th</sup> International Pedagogic and Linguistic ERL CONFERENCE

### EDUCATIONAL ROLE OF LANGUAGE – Links between BELIEFS and LANGUAGE

Sarajevo (Bosnia and Herzegovina), 27-28 June 2024

#### CONFERENCE PROGRAMME

**NOTE: All the times shown are in accordance with Central European Time**

**Venue:** Sarajevo, International University of Sarajevo, Hrasnička 15, Ilidža

**ONLINE platform:** Webex and Microsoft Teams (links sent by email)

Outline & plenary sessions

#### Day 1 – June 27, 2024 (Thursday)

08.30-09.00	Registration
<b>PLENARY SESSION</b>	
09.00-09.10	Ervin Kovačević (Bosnia and Herzegovina, International University of Sarajevo) <b>Opening the ERL Conference</b>
09.10-09.30	Michał Daszkiewicz (ERLA; Poland, University of Gdańsk): <b>ERL in 2024 – moving from linguistic affect to linguistic beliefs (Cycle II, Year 2). On the expansion of ERL Group</b>
09.30-10.00	Andre Kurowski (University of Chichester), Eva Mikuska (England, University of Portsmouth): <b>The impact of gender diversity on expression -the language of sexuality- how Childhood Studies students understand the semantics of gender dysphoria</b>
10.00-10.40	Ana Maria Ferreira Barcelos (Federal University of Viçosa, Languages Department, Viçosa, Brazil): <b>Research on beliefs about language learning and teaching: insights, challenges, and possibilities</b>
10.40-11.15	Coffee & snacks
11.15-12.45	<b>GROUP SESSIONS 1-3</b> <b>Beliefs through SOCIO-LINGUISTIC / CULTURAL / LITERARY lenses</b>
13.00	Trip to Bjelašnica – for lunch and networking

#### Day 2 – June 28, 2024 (Friday)

08.30-09.30	<i>Workshop</i> – Leah Davcheva: <b>Beliefs and practices in zones of interculturality and linguistic identity play</b>
<b>PLENARY SESSION</b>	
09.30-10.00	Žolt Lazar (University of Novi Sad, Serbia): <b>Omnipotence of words in magic and religion</b>
10.00-10.30	Mart Rannut (University of Tartu, Estonia): <b>Attitudes and beliefs in language conflict</b>
Short break	
10.40-11.10	Ervin Kovačević (Bosnia and Herzegovina, International University of Sarajevo): <b>Connecting the dots: language complexity, proficiency, and learning mindsets</b>
11.10-11.30	<i>ERL Project Call</i> - Michał Daszkiewicz: (ERLA; Poland, University of Gdańsk) <b>Positioning of spoken language – by students, teachers, systems – across different countries</b>
11.30-11.45	Coffee & snacks
11.45-13.00	<b>GROUP SESSIONS 4 &amp; 5</b> <b>Beliefs and the SEMANTIC / INSTRUCTIONAL dimension</b>
13.00-14.00	Lunch at the campus
14.00-15.30	<b>GROUP SESSIONS 6 &amp; 7</b> <b>Beliefs and the PERSONAL / INTERPERSONAL &amp; INTER-LINGUISTIC dimension</b>
15.30-16.00	Round-up & the cocktail
16.00	ERLA Meeting
18.00	Sightseeing tour with a guide

Following the conference, do stay in touch, join ERLA yourself / ERLG with your institution, submit a paper to ERL Journal, accompany us on the ERL Trajectory! For more, see the last page of this programme.

# Day 1: June 27, 2024 (Thursday)

## 11.15-12.45 GROUP SESSIONS 1-3

### BELIEFS through..

	<b>... SOCIOLINGUISTIC LENSES</b> <b>SESSION 1: Senate Room</b> <b>Moderator: Assoc. Prof. Dr. Almasa Mulalić and Prof. Mirza Čengić</b>	<b>... CULTURAL LENSES</b> <b>SESSION 2: Grand Amphitheater</b> <b>Moderator: Prof. Emina Jelešković</b>	<b>... LITERARY LENSES</b> <b>SESSION 3: Conference Room</b> <b>Moderator: Prof. Emina Lagumdžija</b>
11.15-11.30	<p>Tekla Gabunia (Georgia, Ivane Javakhishvili Tbilisi State University):</p> <p><b><i>Sociolinguistic aspects of language perceptions in Georgia: unveiling motivations for learning languages guided by beliefs</i></b></p>	<p>Zlatan Bejdić (Spain, Universidad Complutense de Madrid):</p> <p><b><i>Language, belief, and cultural resilience: exploring Rastafarian discourse in Britain</i></b></p>	<p>Gunvald Axner Ims (Norway, University of South-Eastern Norway):</p> <p><b><i>Links between beliefs and language in adaptations of 14th-century Persian poetry in a 19th-century Turkish novel</i></b></p>
11.30-11.45	<p>Ketevan Gochitashvili (Georgia, University "Geometri". Ivane Javakhishvili Tbilisi State University), Giuli Shabashvili (Georgia, Ivane Javakhishvili Tbilisi State University):</p> <p><b><i>Sociolinguistic analysis of superstitions: phrases and Idioms in Georgian discourse</i></b></p>	<p>Marta Lechowska (Poland, Jagiellonian University in Kraków):</p> <p><b><i>Culture as a secondary modeling system: changing language - changing worldview. On the example of Russian culture</i></b></p>	<p>Nejla Kalajdzisalihović, Lejla Mulalic (both: Bosnia and Herzegovina, University of Sarajevo):</p> <p><b><i>Stories we live and die by: 'salience' and 'conviction' in nature writing</i></b></p>
11.45-12.00	<p>Agnieszka Połomska-Suchomel (Czech Republic, Masaryk University Language Centre):</p> <p><b><i>Czech youth preferences for English language use in out-of-school activities</i></b></p>	<p>Leah Davcheva (Bulgaria, AHA Moment, Centre for Interculturality, Solutions Focus, and Host Leadership):</p> <p><b><i>Zones of Interculturality and Linguistic Identities</i></b></p>	<p>Ilma Hasić (Bosnia and Herzegovina, Maarif Schools of Sarajevo):</p> <p><b><i>The portayal of magic and beliefs in the movie adaptation of Roald Dahl's "Matilda"</i></b></p>
12.00-12.15	<p>Elvira Kūūn (Estonia, Narva College of Tartu University):</p> <p><b><i>Attitudes and perceptions of Russian-speaking families about the transition to Estonian-language education in Ida-Viru county in Estonia</i></b> [ONLINE]</p>	<p>Daniela Feistritzer (Norway, Porsgrunn Upper Secondary School/University of South-East Norway):</p> <p><b><i>Worldview and matters of students from third countries that learn Norwegian and/or English simultaneously</i></b></p>	<p>Maja Muhić (North Macedonia, South East European University):</p> <p><b><i>Exploring the tapestry of language and culture through the lens of Claude Lévi-Strauss</i></b></p>
12.15-12.30	<p>Sameena Malik (Italy, University of Bologna; England, Loughborough University):</p> <p><b><i>An exploration of speaking anxiety factors: A case study of Lahore Leads university undergraduates in Pakistan</i></b> [ONLINE]</p>	<p>Patman Antadze-Malashkhia (Georgia, Ivane Javakhishvili Tbilisi State University):</p> <p><b><i>The historical prestige of the Persian language in Georgia</i></b></p>	<p>Nadira Puškar Mustafić, Nejira Mulahmetović (both: Bosnia and Herzegovina, International University of Sarajevo):</p> <p><b><i>Shaping and Reflecting Societal Beliefs through Narrative and Visual Language: A Comparative Study of Beauty and the Beast</i></b></p>
12.30-12.45	<p>Firas Al Jumaili, Sheren Al Hiti (both: Oman, Al Buraimin University College):</p> <p><b><i>Citizenship as a fidelity to the land: a socio-ecological reading of Wendell Berry's select works</i></b> [ONLINE]</p>	<p>Jerca Vogel (Slovenia, University of Ljubljana):</p> <p><b><i>Critical cultural awareness as an essential component of critical communicative competence</i></b></p>	<p>Vesna Suljić (Bosnia and Herzegovina, International University of Sarajevo):</p> <p><b><i>Roald Dahl's legacy: the language playground for sharing beliefs about children's competences</i></b></p>

## Day 2: June 28, 2024 (Friday)

11.45-13.00 GROUP SESSIONS 4 & 5

**BELIEFS and...**

	<b>... the SEMANTIC DIMENSION</b> SESSION 4: Senate Room Moderator: Dr. Emina Jelešković and Prof. Mirza Čengić	<b>... the INSTRUCTIONAL DIMENSION</b> SESSION 5: Conference Room Moderator: Assist. Prof. Dr. Vesna Suljić and Prof. Emina Lagumdžija
11.45-12.00	Tatjana Glušac, Ana Simić (both: Serbia, Dr Lazar Vrkatić Faculty of Law and Business Studies): <b><i>Student teachers' beliefs about the teaching profession expressed through metaphors</i></b>	Melisa Okičić (Bosnia and Herzegovina, University of Sarajevo): <b><i>Challenges in teaching EFL students to think and write in academic English: a case study from the University of Sarajevo</i></b>
12.00-12.15	Margit Kirss (Estonia, Olustvere School of Service and Rural Economics): <b><i>Bread, naan, leib, tortilla - simply words or something deeper</i></b>	Alina Resceanu, Vlad Preda, Eugen Dumitrascu (Romania, University of Craiova): <b><i>Exploring students' beliefs on motivational factors in English-medium instruction (EMI) study programmes: a case study</i></b>
12.15-12.30	Jana Živanović (Serbia, University of Belgrade): <b><i>The role of conceptual metaphor in forming attitudes towards teaching and learning a foreign language from the perspective of students and teachers</i></b>	Mirzana Pašić Kodrić (Bosnia and Herzegovina, International University of Sarajevo): <b><i>The Educational Role of Children's Literature and Bibliotherapy in Primary Schooling</i></b>
12.30-12.45	Marina Nedeljković (Serbia, College of Vocational Studies for Teachers and Buissnes Informatics Sirmium): <b><i>Self-perception of the position of rural women in rural tourism through key terminological determinants</i></b>	Neda Radosavlevikj (North Macedonia, South East European University): <b><i>The impact of positive psychology on blended learning</i></b>
12.45-13.00	Federico Piccolo (Italy, University of Palermo): <b><i>Deviations and changes in the perception of error: a cognitive analysis of deictic verbs of motion. Observations, reflections and teaching proposals between Russian and Italian</i></b> [ONLINE]	Georgi Dimitrov (Bulgaria, University of National and World Economy): <b><i>Focus projection as a means of improving fluency: practical tasks</i></b> [ONLINE]

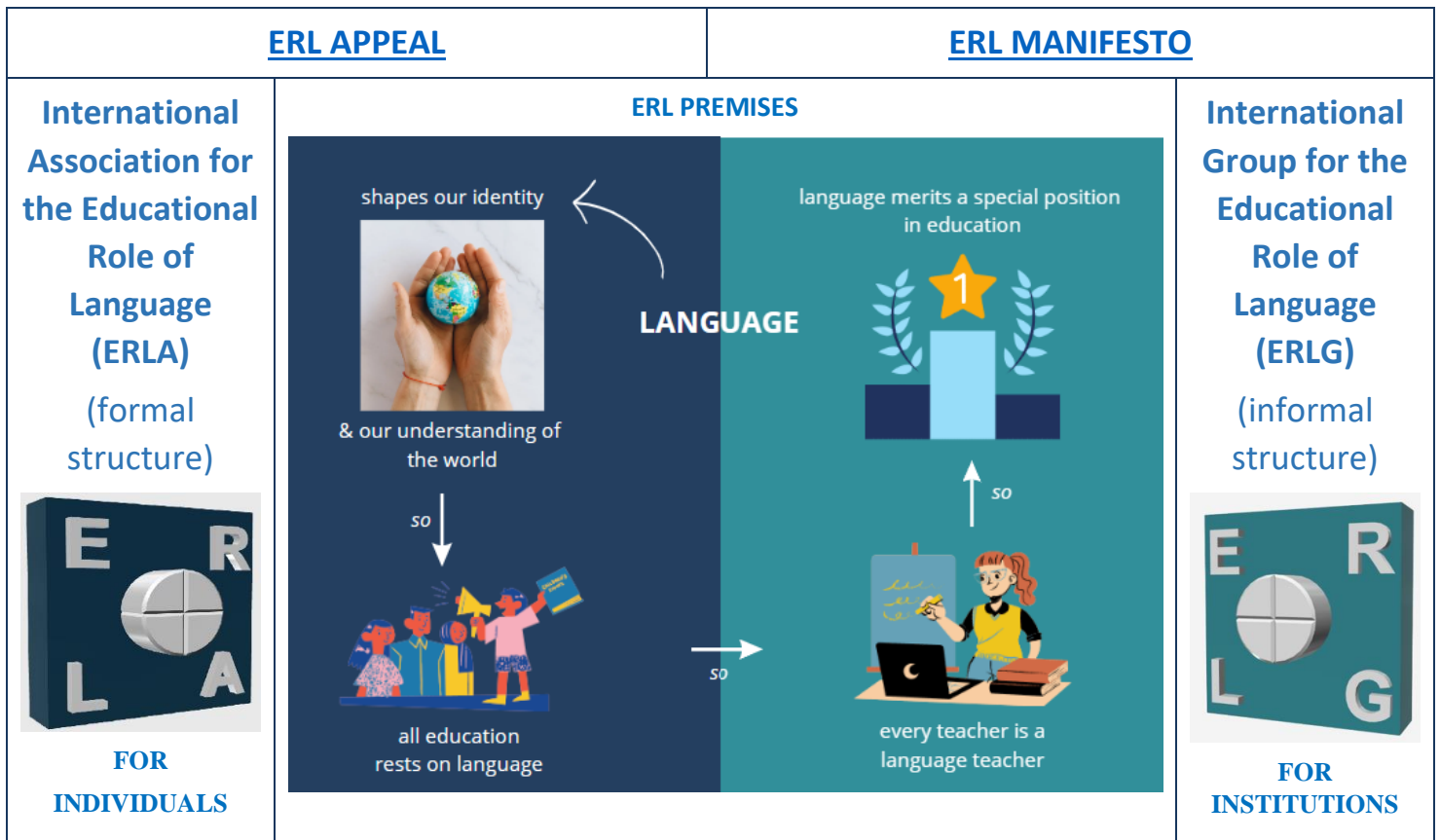
14.00-15.30 GROUP SESSIONS 6 & 7

BELIEFS and...

	... the <b>PERSONAL DIMENSION</b> SESSION 6: Senate Room Moderator: Prof. Mirza Čengić	... the <b>INTERPERSONAL &amp; INTER-LINGUISTIC DIMENSION</b> SESSION7: Conference Room Moderator: Assist. Prof. Dr. Nadira Puškar and Prof. Emina Lagumdžija
14.00-14.15	Jens Skarkerud Haugan (Norway, Inland Norway University of Applied Sciences): <b><i>Belief and language – I don't think we need to learn Nynorsk at school</i></b>	Maja Olovčić (Bosnia and Herzegovina, International University of Sarajevo): <b><i>Teacher's empathy and awareness of students' health as crucial EFL beliefs</i></b>
14.15-14.30	Emina Jelešković, Almasa Mulalić (both: Bosnia and Herzegovina, International University of Sarajevo): <b><i>Students' beliefs about Language Learning: a study of university students' beliefs about learning English as a foreign language</i></b>	Ajla Pervan (Bosnia and Herzegovina, International University of Sarajevo): <b><i>Multilingualism and empathy: how language learning improves relationality</i></b>
14.30-14.45	Lejla Mustoo Bašer, Selma Tvrtković-Hasandić, Faruk Obuća (Bosnia and Herzegovina, International University of Sarajevo): <b><i>Identity expression and bilingualism: how the language we speak influences cognition and emotion</i></b>	Salema Drljević (Bosnia and Herzegovina): <b><i>The evaluation of the death and the Dervish's Turkish and English translations in the terms of contemporary translation theory and criticism approaches</i></b>
14.45-15.00	Nataliia Krynska (Ukraine, Professional Association of English Language Teachers): <b><i>Language ideologies of English language: how multilingual teachers speak about languages</i></b>	Ion Resceanu (Romania, University of Craiova): <b><i>The relation between language and belief in the old Romanian biblical translations</i></b>
15.00-15.15	Damir Softić (Bosnia and Herzegovina, Sarajevo): <b><i>The constitution of identity and belief system of diaspora individuals through the language and discourse</i></b> [ONLINE]	Sonja Kitamovska Kimovska, Solzica Popovska, Milena Sazdovska Pigulovska (all: North Macedonia, "Ss. Cyril and Methodius" University): <b><i>Teachers' and students' beliefs about translator competence and training practices</i></b> [ONLINE]

# ERL WORLD

<https://educationalroleoflanguage.org/>



Please **NOTE** that the two ERL structures above are **NOT the same as ERL Network**, which is an additional informal structure (created in 2016, i.e. prior to ERL Association & ERL Group), hosted by a website of the University of Gdańsk (Poland) – [Educational Role of Language Network](https://educationalroleoflanguage.org/erl-network/). As the earliest entity, ERL Network remains the official organiser of ERL Conferences.

## Educational Role of Language Journal

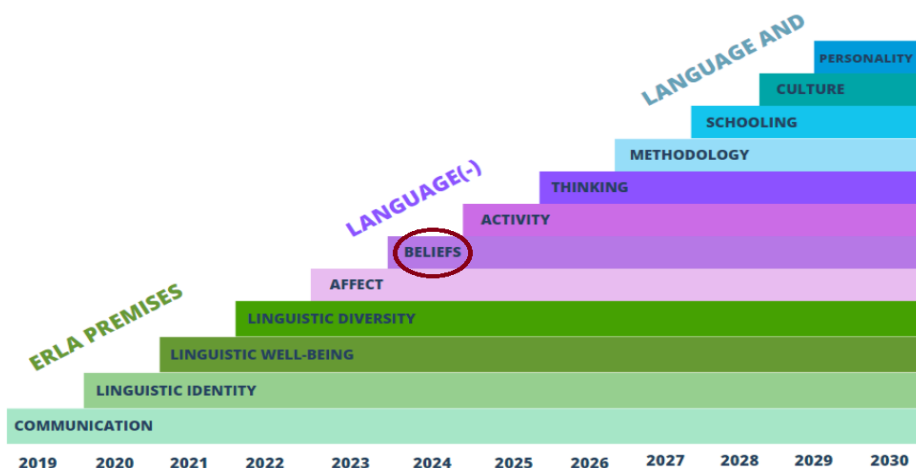
<https://educationalroleoflanguage.org/erl-journal/>

Go to our main page to see ERL Journal’s key data & 10 quality benchmarks, trajectory and themes, index of things, all titles published, alphabetical list of issues, the geographical diversity of ERL Journal, and the list of databases.

**Volume 2024-1(11) – “LINKS BETWEEN BELIEFS AND LANGUAGE” – CALL FOR PAPERS:**

<https://educationalroleoflanguage.org/erl-journal/erl-journal-issues/>

## ERL TRAJECTORY



[educationalroleoflanguage@gmail.com](mailto:educationalroleoflanguage@gmail.com)